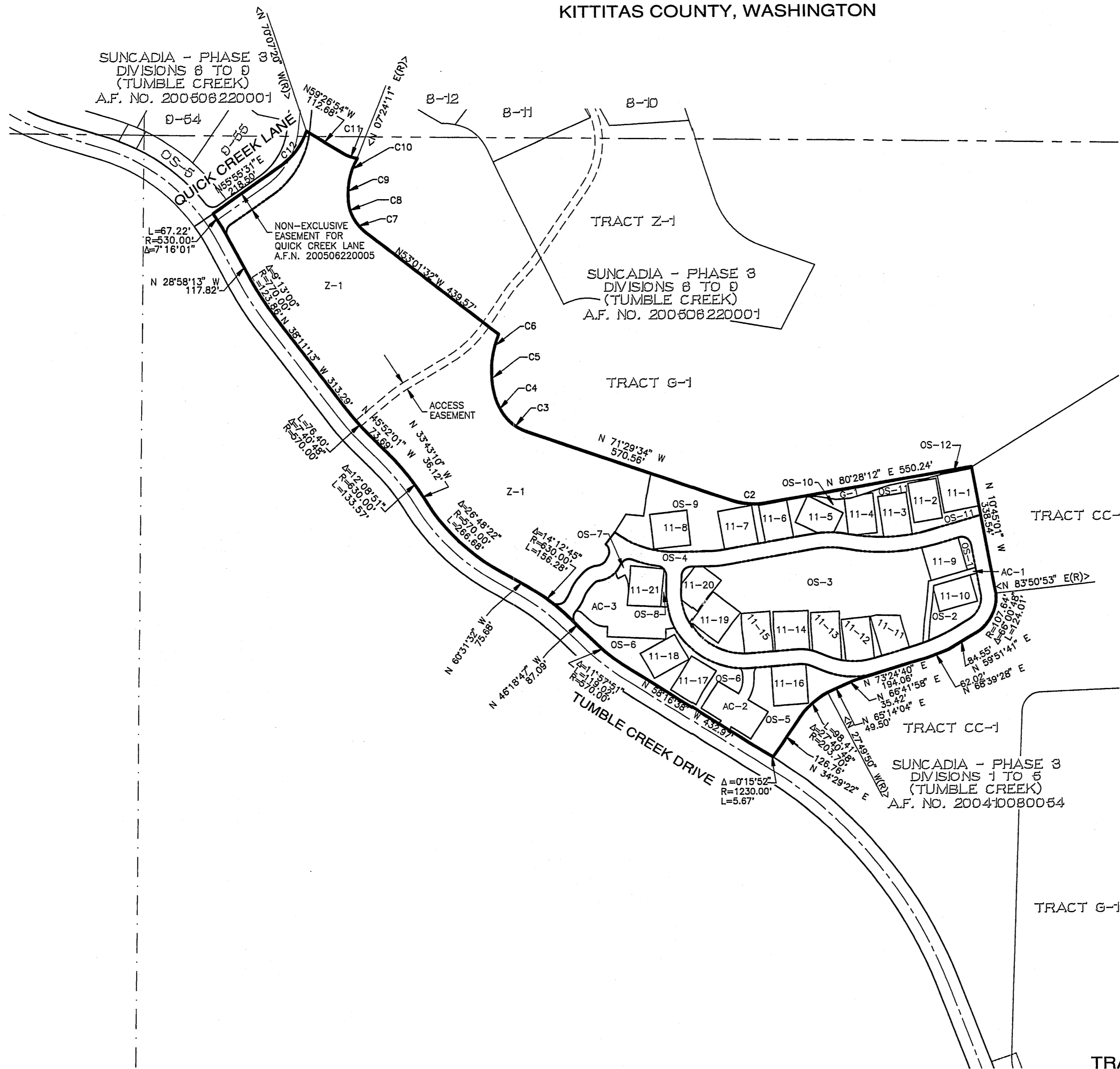


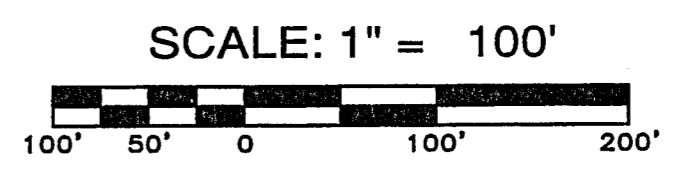
A PORTION OF SECTIONS 14 AND 23, TWP. 20 N., RGE., 14 E., W.M.,
KITTITAS COUNTY, WASHINGTON



CURVE TABLE

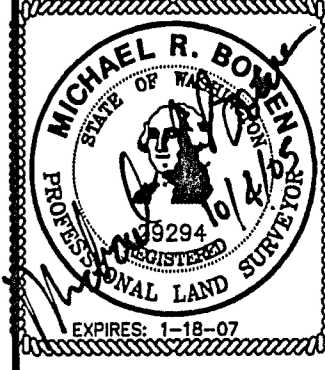
CURVE	DELTA	RADIUS	LENGTH
C2	28°02'14"	200.00	97.87
C3	34°53'16"	122.00	74.29
C4	18°48'33"	150.00	49.24
C5	28°29'29"	230.00	114.37
C6	11°04'07"	290.00	56.02
C7	24°02'58"	120.00	50.37
C8	23°59'35"	110.00	46.06
C9	14°58'29"	200.00	52.27
C10	21°28'26"	165.00	61.74
C11	23°08'55"	100.00	40.40
C12	36°02'51"	180.00	113.25

TRACT LEGEND
 G GOLF
 OS OPEN SPACE
 Z FUTURE DEVELOPMENT
 AC ACCESS AND PARKING TRACT



REVISIONS

NO.	DESCRIPTION/DATE	BY



ESM CONSULTING ENGINEERS, L.L.C.
 33915 1st Way South
 Federal Way, WA 98003
 www.esmcivil.com

Civil Engineering
 Public Works
 Land Surveying
 Project Management
 Land Planning
 Landscape Architecture

Professional Engineer
 MICHAEL R. BOWEN
 License No. 19294
 Expires: 1-18-07

SUNCADIA, L.L.C.

CABINS AT TUMBLE CREEK - DIV. 11
 PRELIMINARY PLAN
 KITTITAS COUNTY WASHINGTON

JOB NO.: 998-310-005
 DWG. NAME: PP-02
 DESIGNED BY:
 DRAWN BY: R.J.W.
 CHECKED BY:
 DATE: 9-28-05
 PRINT DATE:
 SHEET
 PP-02

Plotted: 10/4/2005 10:13 AM File: \\esma\engr\ESM\JOBS\998\310\005\plots\PP-02.dwg